

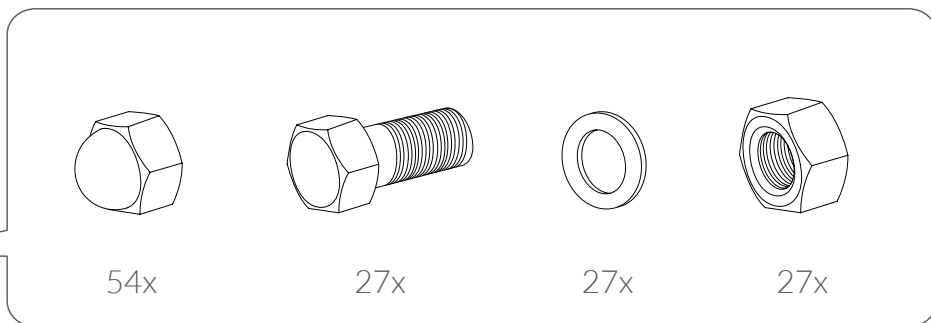
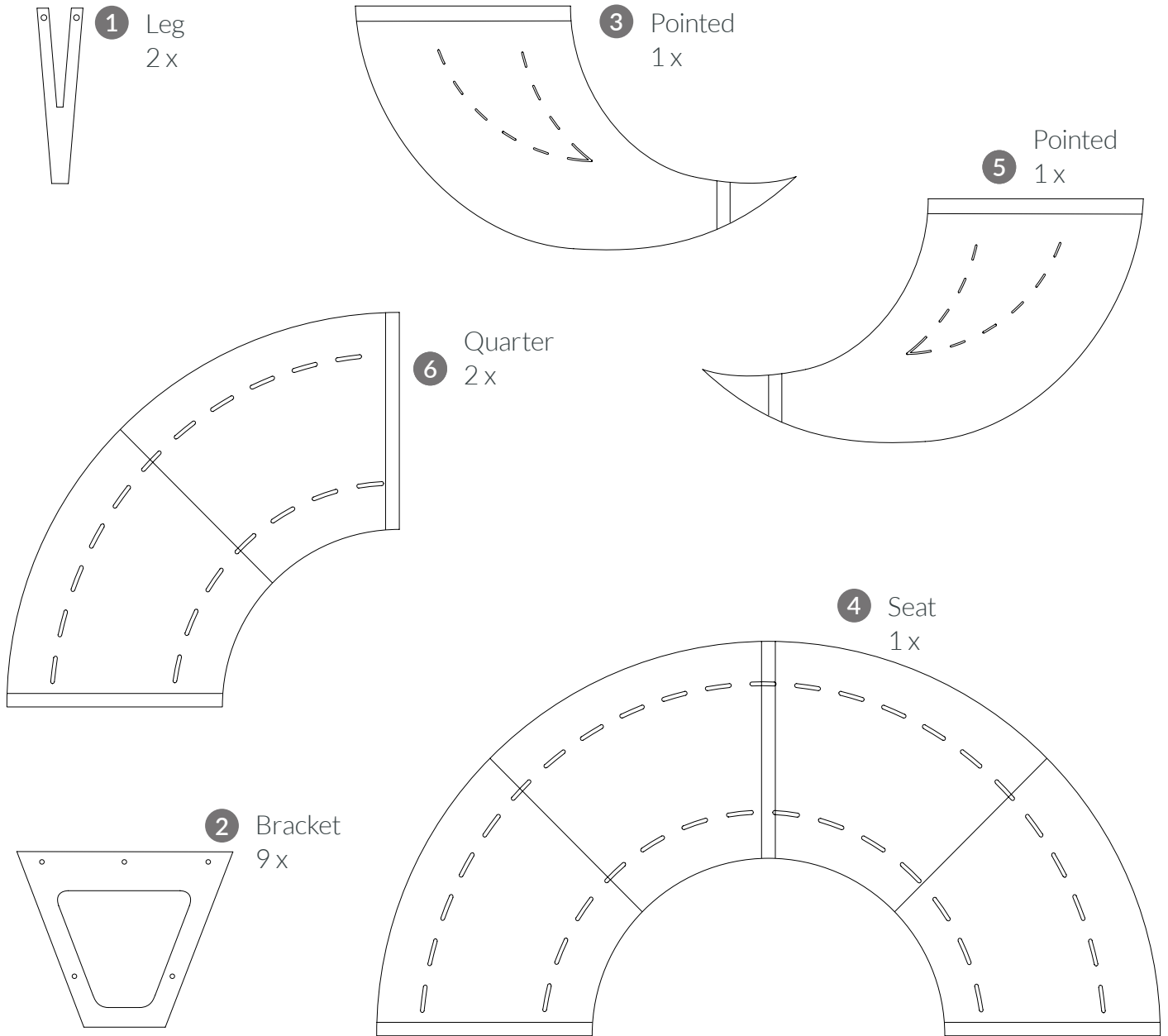
## TRI SET

ASSEMBLY INSTRUCTIONS

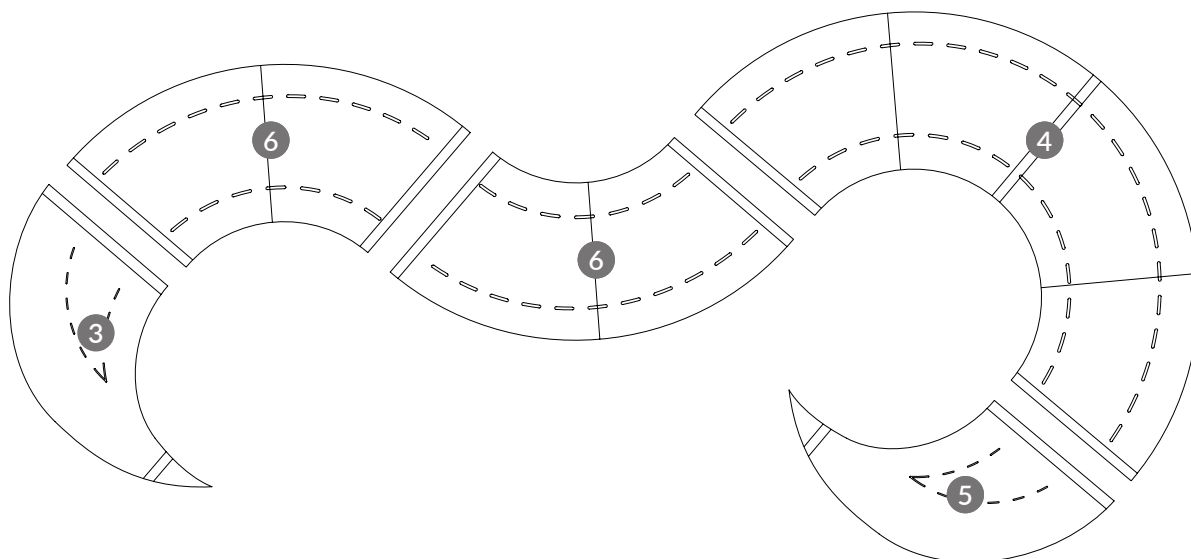
COMPATIBILITY

Gianto Classic 80 / 95 / 120

# TRI SET ELEMENTS

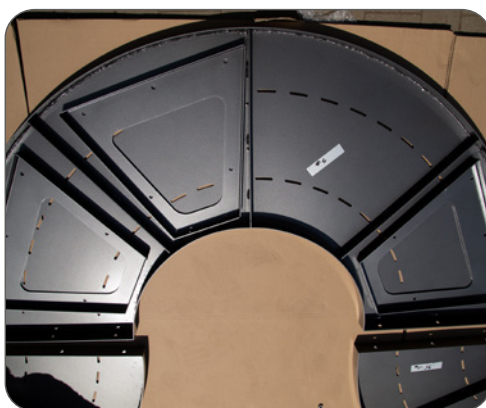


# TRI SET DIAGRAM



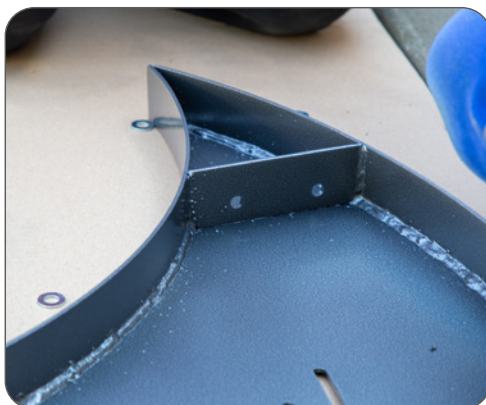
## STEP 1

Place all elements on a flat, protected surface according to the diagram.



## STEP 2

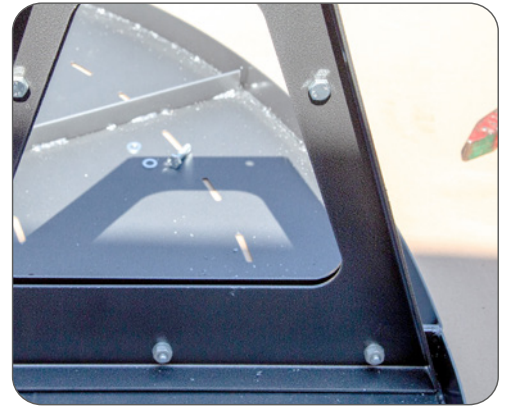
Screw the leg (element 1) to the element 3 with two bolts, put on the nuts and tighten. Do not use too much force to avoid damaging the fastening bolts.



# TRI SET

## STEP 3

In the place where elements 3 and 6 are connected, place two brackets (element 2), one on the edge of each seat and connect them with bolts (three fixing holes at the seat, two holes halfway up the supports), put the washer and nut on the thread and then tighten.



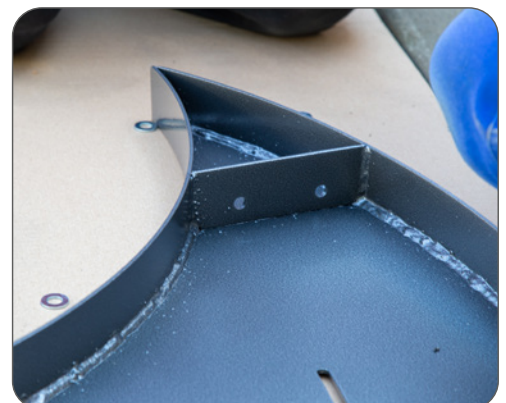
## STEP 4

Connect all the individual elements together (in the order 3-6-6-4-5) in the same way as in step 3.



## STEP 5

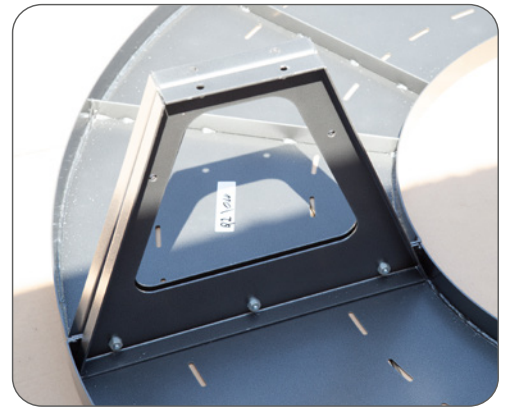
Screw the leg (element 1) to the element 5 with two bolts, put on the nuts and tighten.



# TRI SET

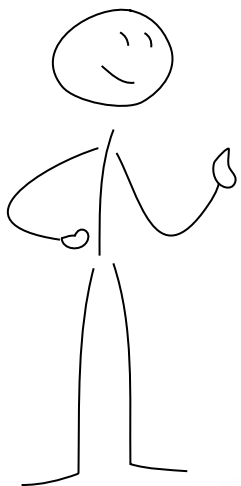
## STEP 6

Check if all screws are properly tightened, fit the plugs where they are needed.



## STEP 7

Put the Wave bench on its feet. That's it! Now you can sit back.



**Terra**<sup>®</sup>  
Group



*TerraCity - a brand of Terra Group*

[www.terracity.eu](http://www.terracity.eu)

**Terra Group**  
create more  
beautiful tomorrow!

ul. Gen. Józefa Sowińskiego 42a  
65-419 Zielona Góra

T: +48 68 455 62 69  
F.: +48 68 414 54 25

E: [info@terra-uk.eu](mailto:info@terra-uk.eu)  
[www.terra-uk.eu](http://www.terra-uk.eu)