

# Concrete Flower Pots

Square / Longo / Assumi



# the beauty of pure form

[www.terraformdesign.eu](http://www.terraformdesign.eu)

Square	7
Longo	11
Assumi	18

let's go with as! 

# CONCRETE FLOWER POTS

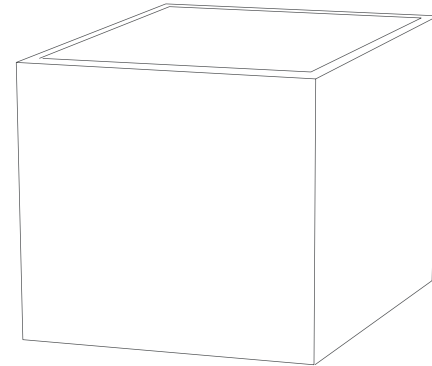
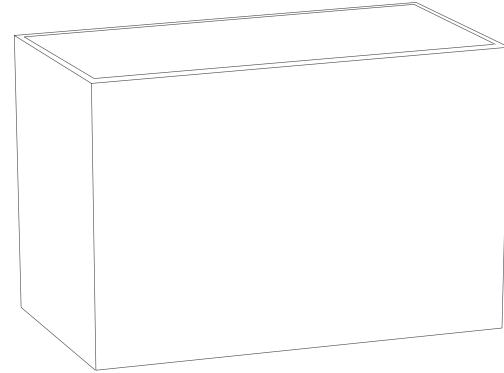
FROST-RESISTANT, INSULATED AND REINFORCED  
POTS MADE FROM ARCHITECTURAL CONCRETE

A pot made from architectural concrete will be perfect in a modern arrangement, it will emphasize the charm of plants, grasses and shrubs. Thanks to cubist shapes, it is easy to obtain a modern, monochrome and unique effect.

The pots can be used outdoors as they are frost-resistant. Their high durability is due to the double reinforcement and the wall thickness of 5.5 - 6 cm (depending on the model).

The bottom and walls of the pot have a 2 cm insulation made of styrodur, which protects plants from cold. The pots are secured against the leakage of moisture.

Thanks to waterproofing, they can be placed inside directly on the floor (no additional tray is needed), without fear of damaging the floor.



impregnated



frost-resistant



insulated



double  
reinforced



highest  
quality



100%  
handmade



# COLORS OF CONCRETE POTS

Coloring of pots in a dyed style



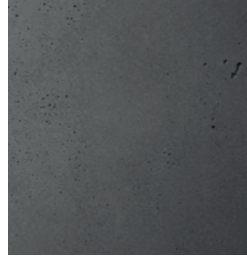
bleached  
001 A



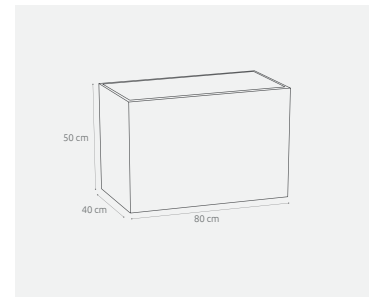
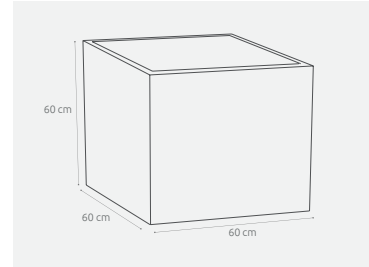
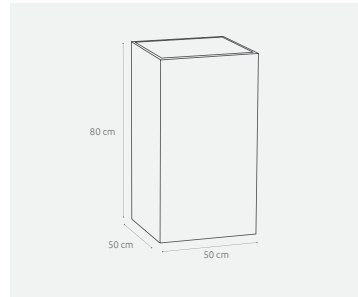
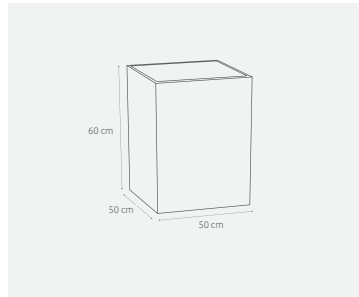
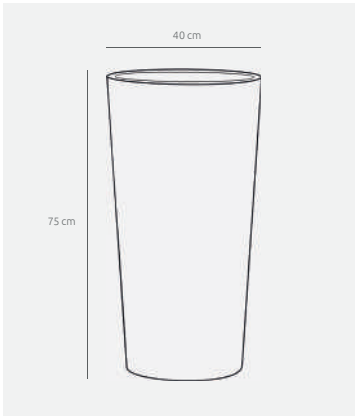
light gray (natural)  
004 A



dark gray  
003 A



anthracite  
002 A



# FLOWER POTS square



MATERIAL AND DIMENSIONS [CM]	WEIGHT	PRICE (€)	
		light gray (natural) - dark gray	anthracite / bleached
SQUARE Architectural concrete 30 x 30 x 30h	36kg	91€	110€
SQUARE Architectural concrete 30 x 30 x 40h	46kg	100€	120€
SQUARE Architectural concrete 30 x 30 x 50h	56kg	108€	130€
SQUARE Architectural concrete 30 x 30 x 80h	85kg	132€	159€
SQUARE Architectural concrete 30 x 30 x 100h	95kg	149€	179€
SQUARE Architectural concrete 40 x 40 x 30 h	70kg	115€	138€
SQUARE Architectural concrete 40 x 40 x 40h	80kg	129€	154€
SQUARE Architectural concrete 40 x 40 x 50h	90kg	141€	169€
SQUARE Architectural concrete 40 x 40 x 80h	130kg	190€	228€
SQUARE Architectural concrete 40 x 40 x 100h	160kg	227€	272€
SQUARE Architectural concrete 50 x 50 x 30h	80kg	146€	175€
SQUARE Architectural concrete 50 x 50 x 40h	90kg	166€	199€
SQUARE Architectural concrete 50 x 50 x 50h	100kg	186€	224€
SQUARE Architectural concrete 50 x 50 x 80h	160kg	227€	272€
SQUARE Architectural concrete 50 x 50 x 100h	180kg	268€	321€
SQUARE Architectural concrete 60 x 60 x 50h	170kg	227€	272€
SQUARE Architectural concrete 60 x 60 x 60h	180kg	246€	297€
SQUARE Architectural concrete 60 x 60 x 70h	190kg	268€	321€





MATERIAL AND DIMENSIONS [CM]	WEIGHT	PRICE (€)	
		light gray (natural) - dark gray	anthracite / bleached
SQUARE Architectural concrete 60x60x80h	200kg	288€	346€
SQUARE Architectural concrete 60x60x100h	220kg	329€	394€
SQUARE Architectural concrete 80x80x50h	220kg	310€	372€
SQUARE Architectural concrete 80x80x70h	280kg	351€	421€
SQUARE Architectural concrete 80x80x80h	300kg	369€	443€
SQUARE Architectural concrete 100x100x100h	400kg	728€	874€
SQUARE Architectural concrete 120x120x95h	462kg	982€	1179€



**12 months guarantee**



# FLOWER POT longo



bleached  
001 A

light gray  
004 A

dark gray  
003 A

anthracite  
002 A



MATERIAL AND DIMENSIONS [CM]	WEIGHT	PRICE (€)	
		light gray (natural) - dark gray	anthracite / bleached
LONGO Architectural concrete 80 x 40 x 30h	100kg	164€	197€
LONGO Architectural concrete 80 x 40 x 40h	110kg	186€	224€
LONGO Architectural concrete 80 x 40 x 50h	150kg	205€	246€
LONGO Architectural concrete 80 x 40 x 60h	160kg	227€	272€
LONGO Architectural concrete 80 x 40 x 70h	180kg	247€	266€
LONGO Architectural concrete 90 x 60 x 40 h	170kg	270€	323€
LONGO Architectural concrete 90 x 60 x 50h	190kg	291€	350€
LONGO Architectural concrete 90 x 60 x 60h	200kg	318€	382€
LONGO Architectural concrete 90 x 60 x 70h	230kg	344€	413€
LONGO Architectural concrete 90 x 60 x 80h	250kg	369€	443€
LONGO Architectural concrete 100 x 30 x 30h	110kg	164€	197€
LONGO Architectural concrete 100 x 30 x 40h	130kg	186€	224€
LONGO Architectural concrete 100 x 30 x 50h	150kg	207€	248€
LONGO Architectural concrete 100 x 30 x 60h	170kg	229€	274€
LONGO Architectural concrete 100 x 30 x 70h	190kg	247€	297€
LONGO Architectural concrete 100 x 40 x 40h	150kg	207€	248€
LONGO Architectural concrete 100 x 40 x 50h	170kg	229€	274€
LONGO Architectural concrete 100 x 40 x 60h	190kg	247€	297€



MATERIAL AND DIMENSIONS [CM]	WEIGHT	PRICE (€)	
		light gray (natural) - dark gray	anthracite / bleached
LONGO Architectural concrete 100 x 40 x 100h	300kg	288€	346zł
LONGO Architectural concrete 100 x 50 x 30h	140kg	207€	248€
LONGO Architectural concrete 100 x 50 x 40h	160kg	229€	274€
LONGO Architectural concrete 100 x 50 x 50h	180kg	247€	297€
LONGO Architectural concrete 100 x 50 x 60h	200kg	269€	323€
LONGO Architectural concrete 100 x 50 x 100h	305kg	295€	354€
LONGO Architectural concrete 100 x 80 x 40h	190kg	369€	443€
LONGO Architectural concrete 100 x 80 x 50h	230kg	393€	472€
LONGO Architectural concrete 100 x 80 x 60h	270kg	410€	492€
LONGO Architectural concrete 100 x 80 x 80h	340kg	434€	554€
LONGO Architectural concrete 120 x 40 x 30h	160kg	207€	248€
LONGO Architectural concrete 120 x 40 x 40h	180kg	227€	272€
LONGO Architectural concrete 120 x 40 x 50h	200kg	247€	297€
LONGO Architectural concrete 120 x 40 x 60h	220kg	269€	323€
LONGO Architectural concrete 120 x 40 x 70h	240kg	288€	346€
LONGO Architectural concrete 120 x 40 x 100h	320kg	312€	374€
LONGO Architectural concrete 120 x 50 x 30h	165kg	227€	272€
LONGO Architectural concrete 120 x 50 x 40h	190kg	247€	297€



MATERIAL AND DIMENSIONS [CM]	WEIGHT	PRICE (€)	
		light gray (natural) - dark gray	anthracite / bleached
LONGO Architectural concrete 120 x 50 x 50h	215kg	269€	323€
LONGO Architectural concrete 120 x 50 x 70h	265kg	310€	372€
LONGO Architectural concrete 120 x 50 x 80h	290kg	329€	394€
LONGO Architectural concrete 120 x 70 x 50h	250kg	351€	421€
LONGO Architectural concrete 120 x 70 x 60h	270kg	384€	461€
LONGO Architectural concrete 120 x 70 x 70h	300kg	410€	492€
LONGO Architectural concrete 140 x 30 x 40h	160kg	288€	346€
LONGO Architectural concrete 140 x 30 x 50h	180kg	317€	380€
LONGO Architectural concrete 140 x 40 x 40h	200kg	310€	372€
LONGO Architectural concrete 140 x 40 x 60h	220kg	336€	439€
LONGO Architectural concrete 150 x 40 x 40h	180kg	329€	394€
LONGO Architectural concrete 150 x 40 x 50h	210kg	362€	435€
LONGO Architectural concrete 150 x 40 x 60h	240kg	396€	476€
LONGO Architectural concrete 160 x 30 x 40h	170kg	373€	447€

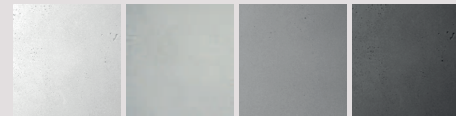


MATERIAL AND DIMENSIONS [CM]	WEIGHT	PRICE (€)	
		light gray (natural) - dark gray	anthracite / bleached
LONGO beton architektoniczny 160 x 30 x 50h	190kg	403€	484€
LONGO beton architektoniczny 160 x 30 x 60h	210kg	437€	524€
LONGO beton architektoniczny 160 x 30 x 70h	230kg	471€	565€
LONGO beton architektoniczny 160 x 50 x 40h	200kg	437€	524€
LONGO beton architektoniczny 160 x 50 x 50h	220kg	471€	565€
LONGO beton architektoniczny 160 x 50 x 60h	250kg	505€	606€
LONGO beton architektoniczny 160 x 50 x 70h	280kg	534€	640€
LONGO beton architektoniczny 220 x 40 x 50h	320kg	847€	1016€



**12 months guarantee**

# POTS **assumi**



bleached  
001 A

light gray  
004 A

dark gray  
003 A

anthracite  
002 A



MATERIAL AND DIMENSIONS [CM]	WEIGHT	PRICE (€)	
		light gray (natural) - dark gray	anthracite / bleached
ASSUMI Architectural concrete $\varnothing$ 40 (Top diameter) x 75h	45kg	247,29€	296,75€
ASSUMI Architectural concrete $\varnothing$ 28 (Top diameter) x 57h	35kg	95,53€	114,63€
ASSUMI Architectural concrete $\varnothing$ 24 (Top diameter) x 47h	24kg	75,20€	90,24€
ASSUMI Architectural concrete $\varnothing$ 18 (Top diameter) x 35h	11kg	43,02€	51,63€
ASSUMI Architectural concrete $\varnothing$ 13 (Top diameter) x 26h	4kg	30,15€	36,18€



**12 months guarantee**



**Terra**<sup>®</sup>  
Group



*TerraForm - a brand of Terra Group*

**Terra Group**

create more  
beautiful tomorrow!

ul. Gen. Józefa Sowińskiego 42a  
65-419 Zielona Góra

T: +48 68 455 62 69  
F.: +48 68 414 54 25

E: [info@terra-uk.eu](mailto:info@terra-uk.eu)  
**[www.terra-uk.eu](http://www.terra-uk.eu)**

*[www.terraformdesign.eu](http://www.terraformdesign.eu)*